

- For single-ply roofing systems.
- Fast installation. Strip-in of field membrane sheet is not required.
- Eliminate water line membrane penetrations.
- Installation with continuous 20 ga. Galvanized cleat.
- Pre-punched holes for proper fastener placement.
- Concealed splice plates.
- Standard Kynar 500 finish.
- 35 year finish warranty.



**ES-1 TESTED**

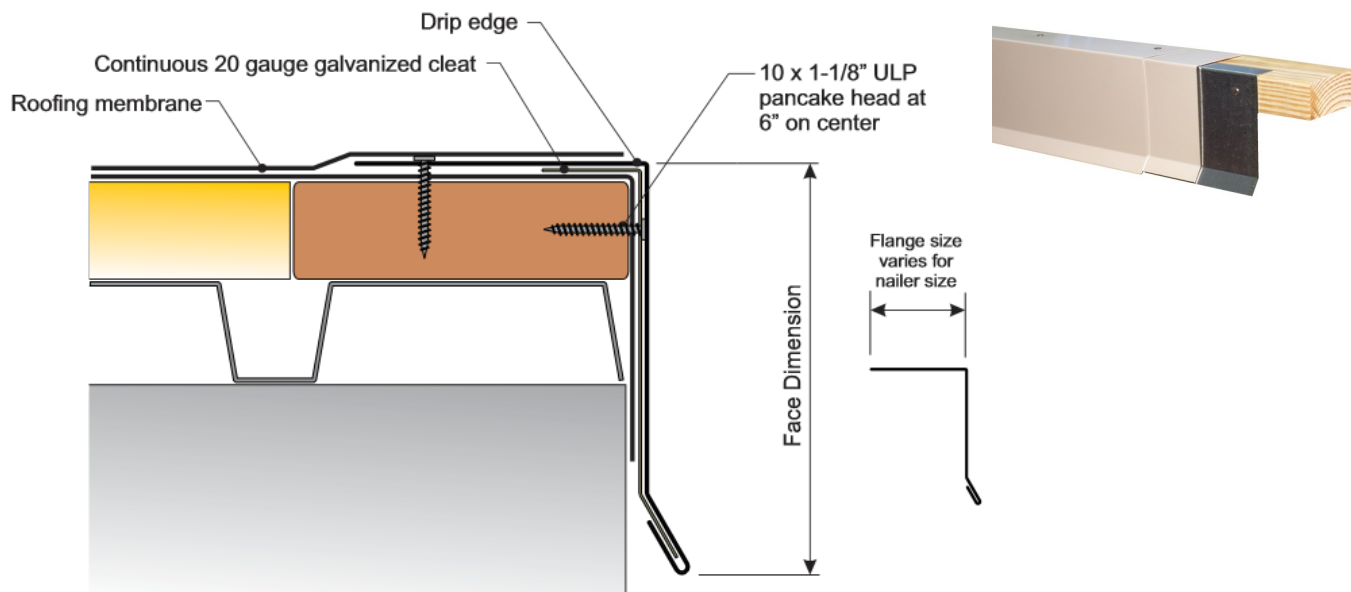
MATERIAL OPTIONS
24 ga. (0.63 mm) galvalume steel
22 ga. (0.76 mm) galvalume steel
24 ga. (0.063 mm) stainless steel
.032" (0.8 mm) aluminum
.040" (1.0 mm) aluminum
.050" (1.2 mm) aluminum
.063" (1.5 mm) aluminum

FINISH OPTIONS
Standard Kynar 500 colors (see color chart for availability)
Custom Kynar colors
Plain galvanized steel or "paintgrip"
Mill finish aluminum
Anodized aluminum
2B finish stainless

### International Building Code Requirement:

2003 IBC-1504.5: "Edge securement for low-slope roofs. Low slope membrane roof systems metal edge securement, except gutters, installed in accordance with Section 1507, shall be designated in accordance with ANSI/SPRI ES-1, except the basic wind speed shall be determined from Figure 1609."





- Applicable with most roofing systems.
- Installation with continuous 20 gauge galvanized cleat.
- Pre-punched holes for proper fastener placement.
- ANSI/APRI ES-1 tested.
- International Building Code (IBC 2003 & 2006) compliant.
- Concealed splice plates (optional).
- Flange dimension fabricated to suit roofing system requirements.
- Standard finish is PVDF fluoropolymer coating in 30 standard colors.
- 35 year finish warranty.



**ES-1 TESTED**

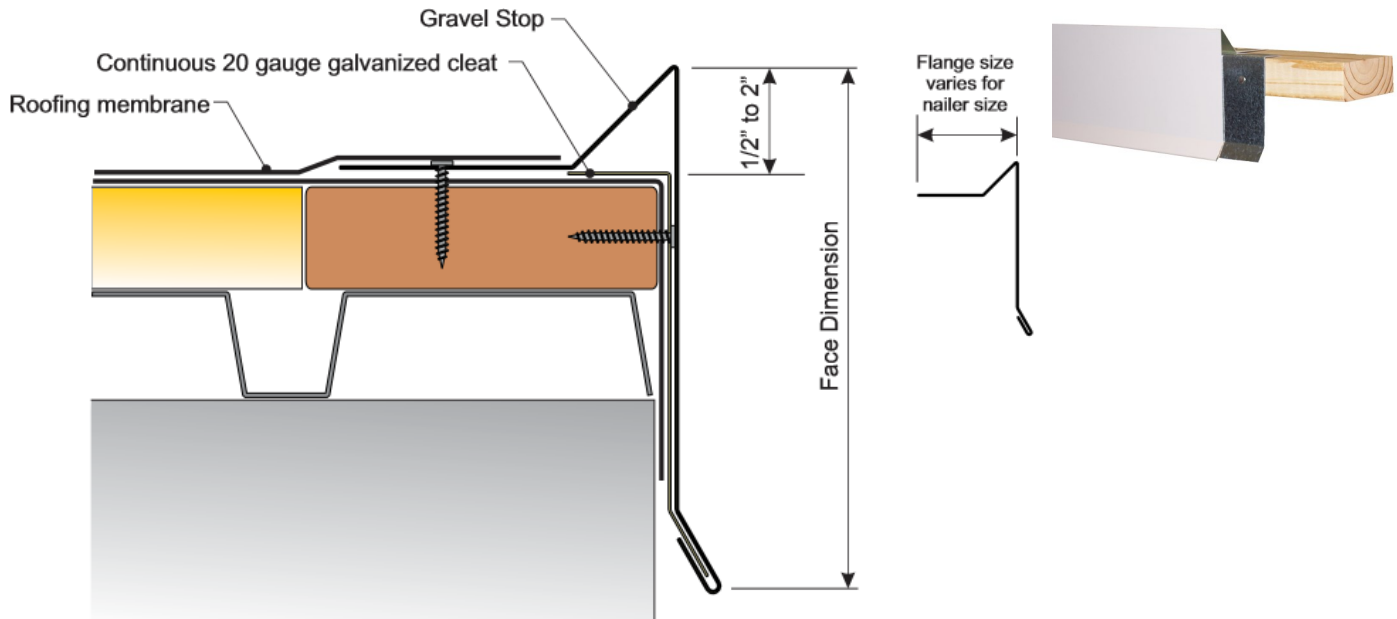
MATERIAL OPTIONS
24 ga. (0.63 mm) galvalume steel
22 ga. (0.76 mm) galvalume steel
24 ga. (0.063 mm) stainless steel
.032" (0.8 mm) aluminum
.040" (1.0 mm) aluminum
.050" (1.2 mm) aluminum
.063" (1.5 mm) aluminum

FINISH OPTIONS
Standard Kynar 500 colors (see color chart for availability)
Custom Kynar colors
Plain galvanized steel or "paintgrip"
Mill finish aluminum
Anodized aluminum
2B finish stainless

**International Building Code Requirement:**

2003 IBC-1504.5: "Edge securement for low-slope roofs. Low slope membrane roof systems metal edge securement, except gutters, installed in accordance with Section 1507, shall be designated in accordance with ANSI/SPRI ES-1, except the basic wind speed shall be determined from Figure 1609."





- Applicable with most roofing systems.
- Installation with continuous 20 gauge galvanized cleat.
- Pre-punched holes for proper fastener placement.
- ANSI/APRI ES-1 tested.
- International Building Code (IBC 2003 & 2006) compliant.
- Concealed splice plates (optional).
- Flange dimension fabricated to suit roofing system requirements.
- Standard finish is PVDF fluoropolymer coating in 30 standard colors.
- 35 year finish warranty.



**ES-1 TESTED**

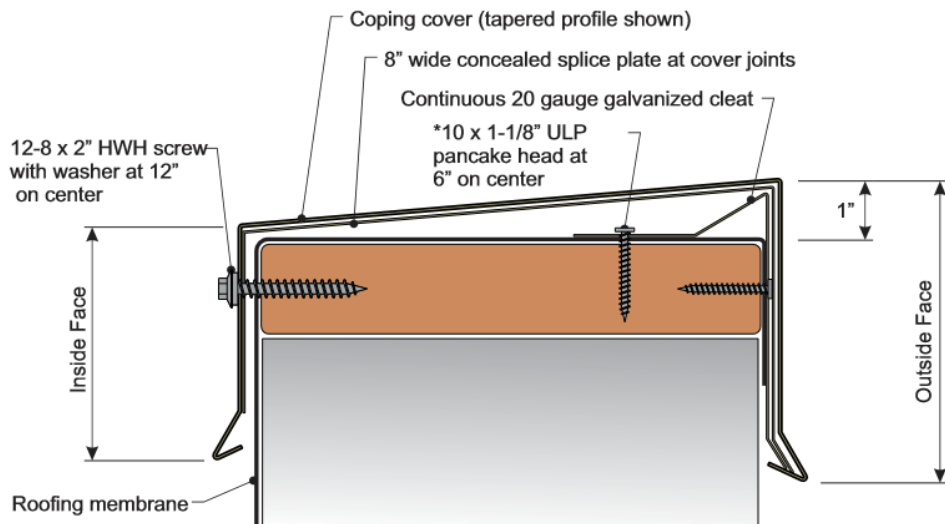
MATERIAL OPTIONS
24 ga. (0.63 mm) galvalume steel
22 ga. (0.76 mm) galvalume steel
24 ga. (0.063 mm) stainless steel
.032" (0.8 mm) aluminum
.040" (1.0 mm) aluminum
.050" (1.2 mm) aluminum
.063" (1.5 mm) aluminum

FINISH OPTIONS
Standard Kynar 500 colors (see color chart for availability)
Custom Kynar colors
Plain galvanized steel or "paintgrip"
Mill finish aluminum
Anodized aluminum
2B finish stainless

**International Building Code Requirement:**

2003 IBC-1504.5: "Edge securement for low-slope roofs. Low slope membrane roof systems metal edge securement, except gutters, installed in accordance with Section 1507, shall be designated in accordance with ANSI/SPRI ES-1, except the basic wind speed shall be determined from Figure 1609."





- Continuous 20 ga. Galvanized cleat with pre-punched holes.
- Available in tapered or flat design.
- ANSI/SPRI ES-1 tested.
- International Building Code (IBC 2003 & 2006) compliant.
- Highest edge shield and coping wind resistance.
- Concealed splice plates.
- Fabricated for wall widths from 6" to 24" wide.
- Standard finish is PVDF fluoropolymer coating in 30 standard and metallic colors.
- 20 year finish warranty.
- Available with factory mitered corners, transitions, and end caps.



**ES-1 TESTED**

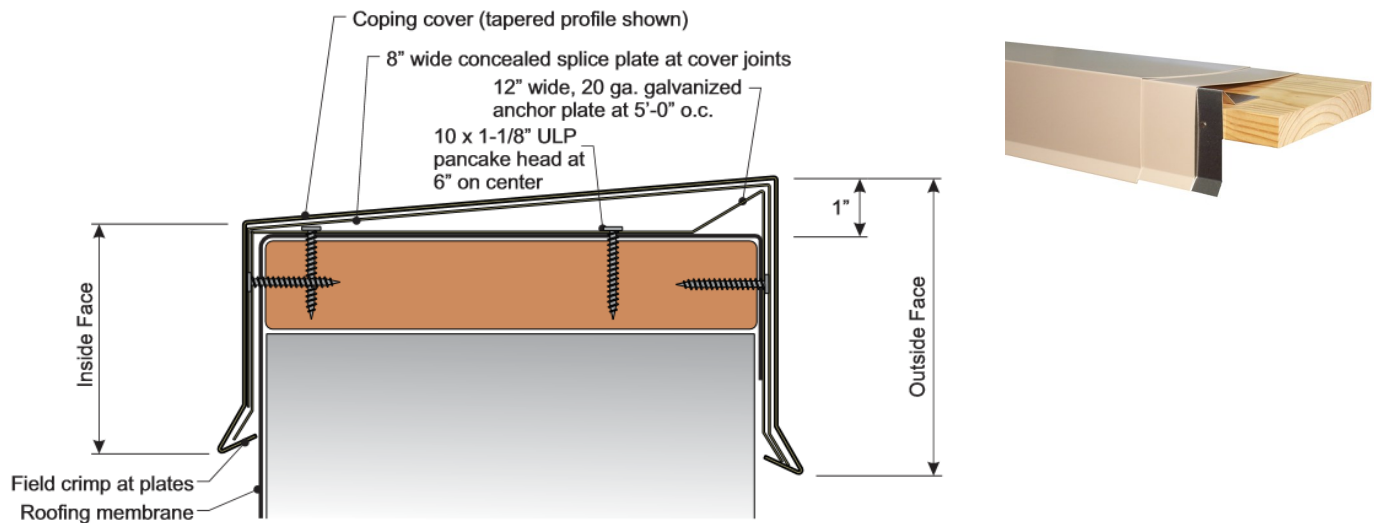
MATERIAL OPTIONS
24 ga. (0.63 mm) galvalume steel
22 ga. (0.76 mm) galvalume steel
24 ga. (0.063 mm) stainless steel
.032" (0.8 mm) aluminum
.040" (1.0 mm) aluminum
.050" (1.2 mm) aluminum
.063" (1.5 mm) aluminum

FINISH OPTIONS
Standard Kynar 500 colors
Custom Kynar colors
Plain galvanized steel or "paintgrip"
Mill finish aluminum
Anodized aluminum
2B finish stainless

**International Building Code Requirement:**

2003 IBC-1504.5: "Edge securement for low-slope roofs. Low slope membrane roof systems metal edge securement, except gutters, installed in accordance with Section 1507, shall be designated in accordance with ANSI/SPRI ES-1, except the basic wind speed shall be determined from Figure 1609."



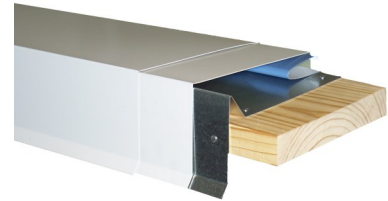
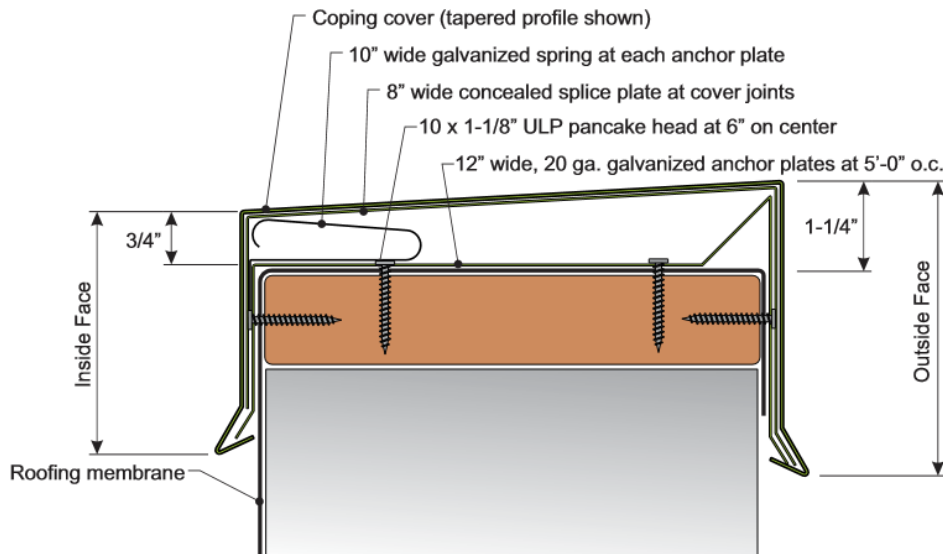


- CrimpLock installation to 20 ga. Galvanized pre-punched anchor plates at 5'-0" o.c.
- The CrimpLock installation eliminates exposed fasteners.
- Concealed splice plates.
- Fabricated for wall widths from 6" to 24" wide.
- Standard finish is PVDF fluoropolymer coating in 30 standard and metallic colors.
- 20 year finish warranty.
- Available with factory mitered corners, transitions, and end caps.

MATERIAL OPTIONS
24 ga. (0.63 mm) galvalumesteel
22 ga. (0.76 mm) galvalume steel
24 ga. (0.063 mm) stainless steel
.032" (0.8 mm) aluminum
.040" (1.0 mm) aluminum
.050" (1.2 mm) aluminum
.063" (1.5 mm) aluminum

FINISH OPTIONS
Standard Kynar 500 colors (see color chart for availability)
Custom Kynar colors
Plain galvanized steel or "paintgrip"
Mill finish aluminum
Anodized aluminum
2B finish stainless





- Spring lock installation with 20 ga. Galvanized anchor plates.
- Available in tapered or flat design.
- No exposed fasteners.
- ANSI/SPRI ES-1 tested.
- International Building Code (IBC 2003 & 2006) compliant.
- Pre-Punched holes for proper fastener placement.
- Concealed splice plates.
- Fabricated for wall widths from 6" to 24" wide.
- Standard finish is PVDF fluoropolymer coating in 30 standard and metallic colors.
- 20 year finish warranty.
- Available with factory mitered corners, transitions, and end caps.



**ES-1 TESTED**

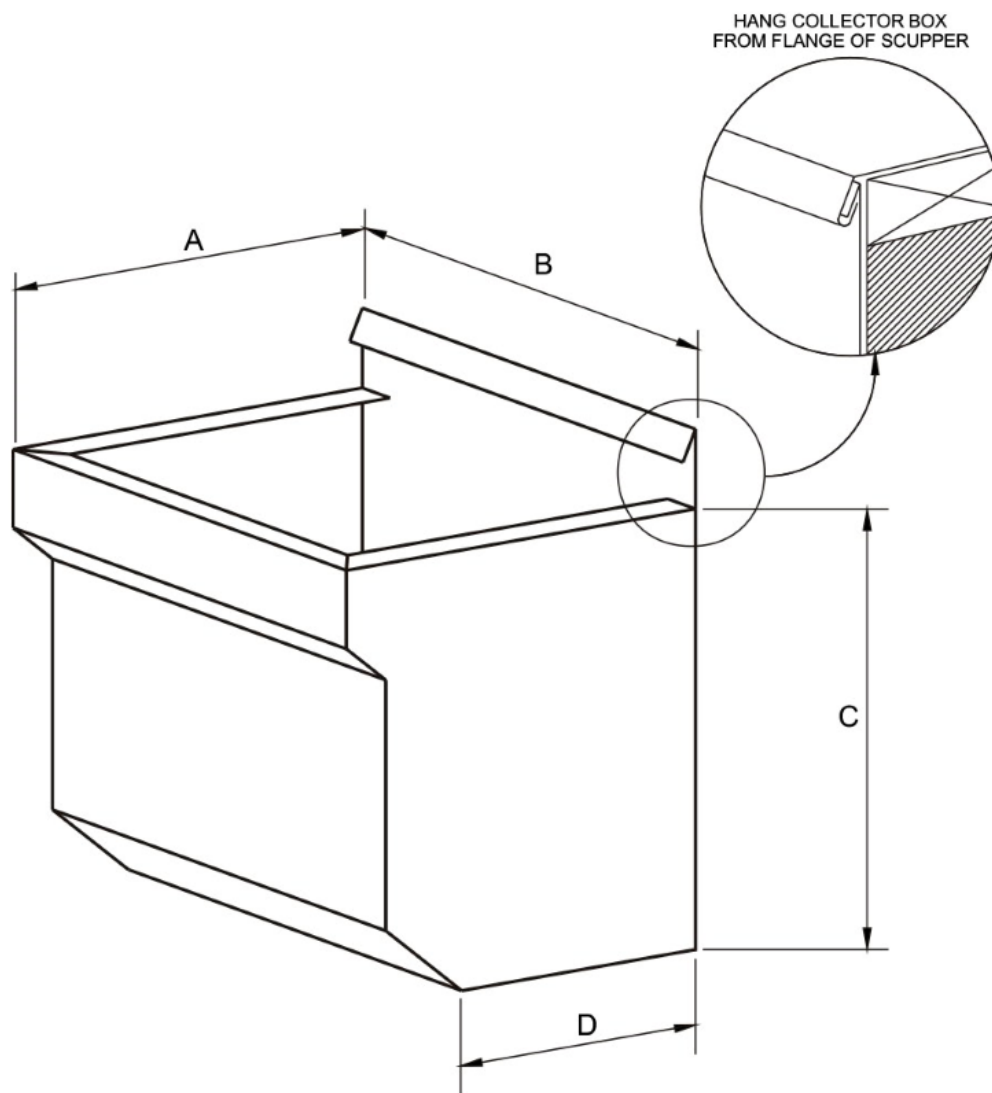
**International Building Code Requirement:**

2003 IBC-1504.5: "Edge securement for low-slope roofs. Low slope membrane roof systems metal edge securement, except gutters, installed in accordance with Section 1507, shall be designated in accordance with ANSI/SPRI ES-1, except the basic wind speed shall be determined from Figure 1609."

MATERIAL OPTIONS
24 ga. (0.63 mm) galvalume steel
22 ga. (0.76 mm) galvalume steel
24 ga. (0.063 mm) stainless steel
.032" (0.8 mm) aluminum
.040" (1.0 mm) aluminum
.050" (1.2 mm) aluminum
.063" (1.5 mm) aluminum

FINISH OPTIONS
Standard Kynar 500 colors (see color chart for availability)
Custom Kynar colors
Plain galvanized steel or "paintgrip"
Mill finish aluminum
Anodized aluminum
2B finish stainless





PRODUCT CODE	A	B	C	D
CB1212	8-1/2"	12"	12"	5"
CB1216	10-1/2"	16"	12"	7"

FINISHES AVAILABLE
Kynar 500
Plain Galvanized or Galvalume Steel
"Paint Grip" Steel

**Notes:**

1. Material: 24 ga. Galvanized steel.
2. All joints are mechanically seamed and sealed continuous with silicone sealant.
3. Aluminum is available with riveted joints.
4. Install 1" below scupper to allow for overflow if plugged with debris or ice.
5. Canted face allows for ice expansion in bottom.
6. Installer to provide outlet for downspout installation.

