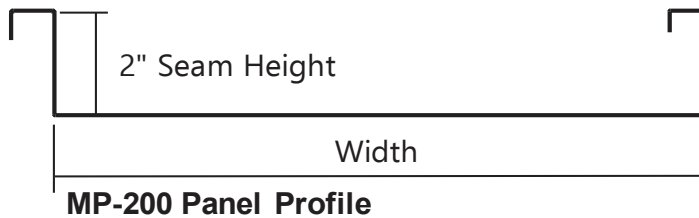
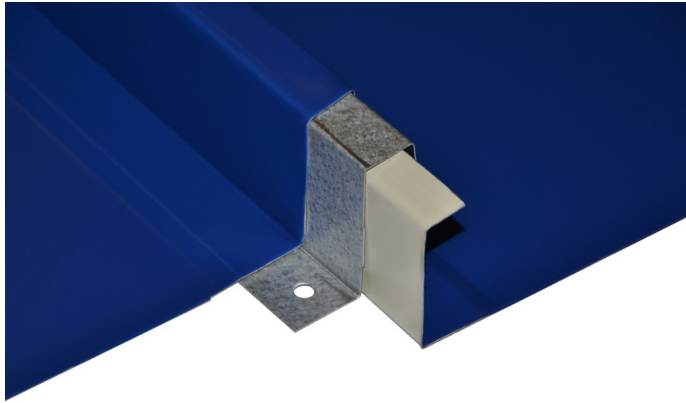
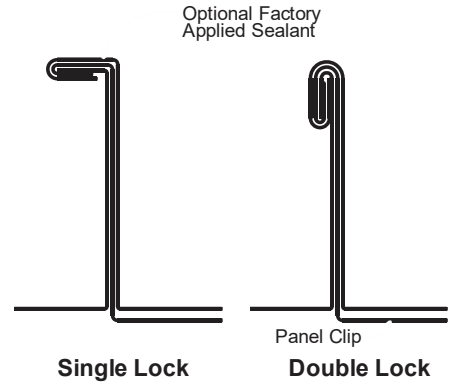


The MP-200 Panel is the preferred panel for low sloped and/or structural applications. This panel has been designed and tested to meet the most demanding of performance requirements. Superior wind uplift resistance can be achieved with the double lock seam profile.

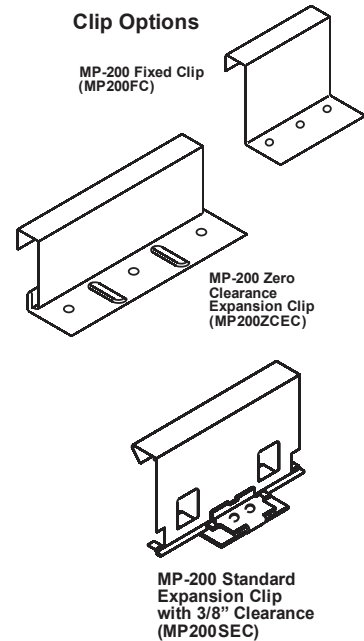


- Architectural (solid substrate) or structural (open framing) applications.
- Mechanically seamed sidelap with option of single or double lock.
- Low slope less than 3:12 available with optional in-seam sealant.
- Slopes down to 1/2:12.
- Concealed clip (fixed or expansion).
- ASTM E-1680-95 air infiltration tested.
- ASTM E-1646-95 water penetration tested.
- ASTM E-1592 tested for structural performance.
- UL 90 uplift resistance classified assemblies.
- Surface patterns include smooth, striated, pencil ribs, and bead ribs.

Optional Seam Profiles



Clip Options



MATERIAL	STANDARD WIDTHS	OPTIONAL WIDTHS
24 ga. Steel	18"	12", 14", 15", 16"
22 ga. Steel	18"	12", 14", 15", 16"
.032" Aluminum	18"	
.040" Aluminum	18"	

