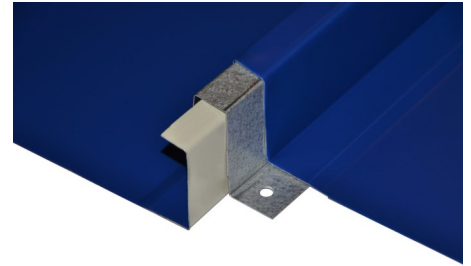


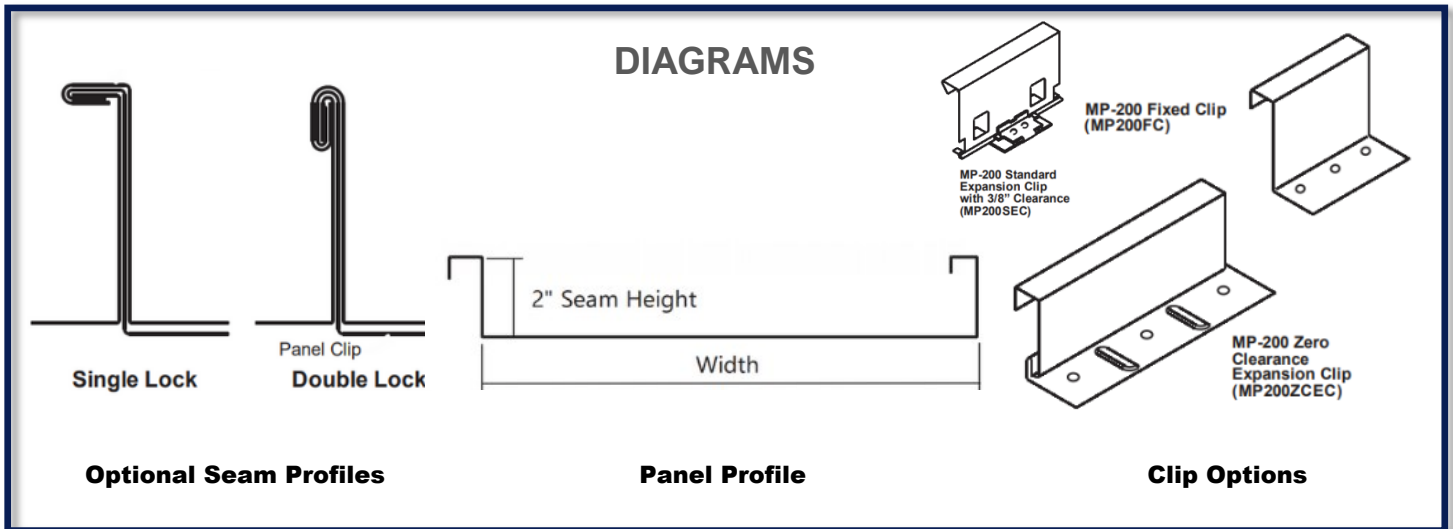
MP-200 PANEL

Standing Seam Series

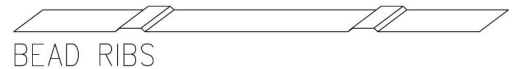
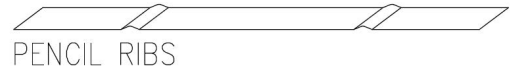
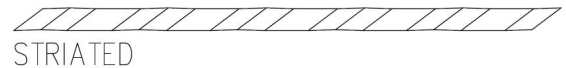


OVERVIEW

The MP-200 Panel is the preferred panel for low sloped and/or structural applications. This panel has been designed and tested to meet the most demanding of performance requirements. Superior wind uplift resistance can be achieved with the double lock seam profile.



MATERIAL	STANDARD WIDTHS	OPTIONAL WIDTHS
24 ga. Steel	18"	12", 14", 15", 16"
22 ga. Steel	18"	12", 14", 15", 16"
.032" Aluminum	18"	
.040" Aluminum	18"	



PRODUCT FEATURES

- Architectural (solid substrate) or structural (open framing) applications
- Mechanically seamed sidelap with option of single or double lock
- Optional in-seam sealant available on slopes less than 3:12
- Panels can be installed on slopes as low as 1/2:12
- Concealed clip (fixed or floating)
- ASTM E-1680-95 air infiltration tested
- ASTM E-1646-95 water penetration tested
- ASTM E-1592 structural performance tested
- UL 90 uplift resistance classified assembly
- Surface patterns include smooth, striated, pencil ribs, and bead ribs