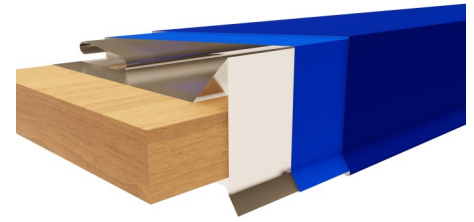
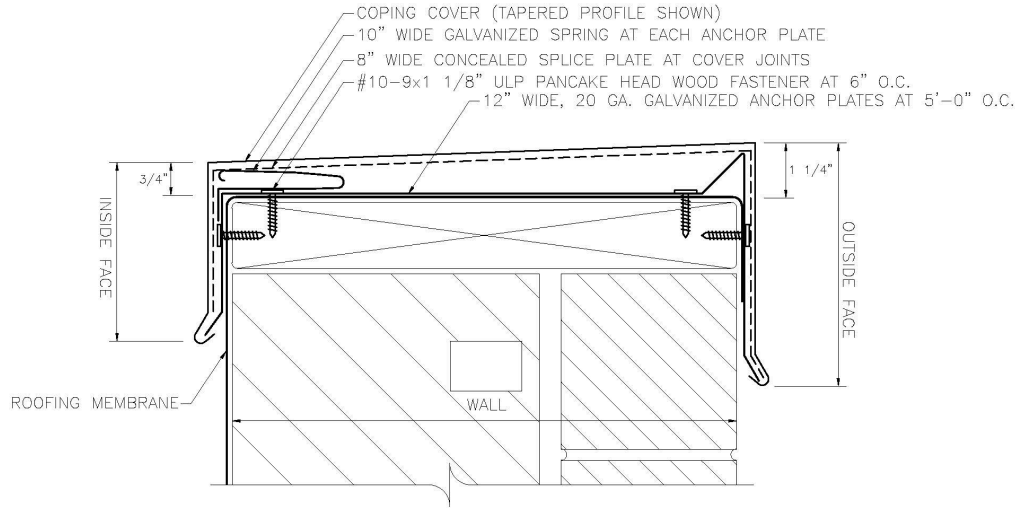


EDGESHIELD MOC3 COPING

Edge Metal Series



DIAGRAM



MOC3 COPING SYSTEM – TAPERED

Material Options

24 ga. (0.63 mm) galvalume steel
22 ga. (0.76 mm) galvalume steel
24 ga. (0.063 mm) stainless steel
.032" (0.8 mm) aluminum
.040" (1.0 mm) aluminum
.050" (1.2 mm) aluminum
.063" (1.5 mm) aluminum

*Aluminum & Copper available in limited quantities, please call for further availability

- Spring Lock Design provides installation using 20 ga. galvanized steel anchor plates
- MOC3 is available in a tapered or flat design
- No exposed fasteners
- Meets ANSI/SPRI ES-1 standard



ES-1 TESTED

International Building Code Requirement: 2003 IBC-1504.5: "Edge securement for low-slope roofs. Low slope membrane roof systems metal edge securement, except gutters, installed in accordance with Section 1507, shall be designated in accordance with ANSI/SPRI ES-1, except the basic wind speed shall be determined from Figure 1609."

PRODUCT FEATURES

- Complies with the International Building Code
- Pre-Punched holes allow for proper and efficient fastener placement
- 12" wide 20 gauge concealed splice plates, spaced at 5' on center

Material Options

Standard Kynar 500 colors (see color chart for availability)
Custom Kynar colors
Plain galvanized steel or "paintgrip"
Mill finish aluminum
Anodized aluminum
2B finish stainless

- Fabricated for wall widths from 6" to 24" wide
- Standard finish is PVDF fluoropolymer coating offered in standard and metallic colors
- 35 year finish warranty is available
- Available with factory mitered corners, transitions, and end caps