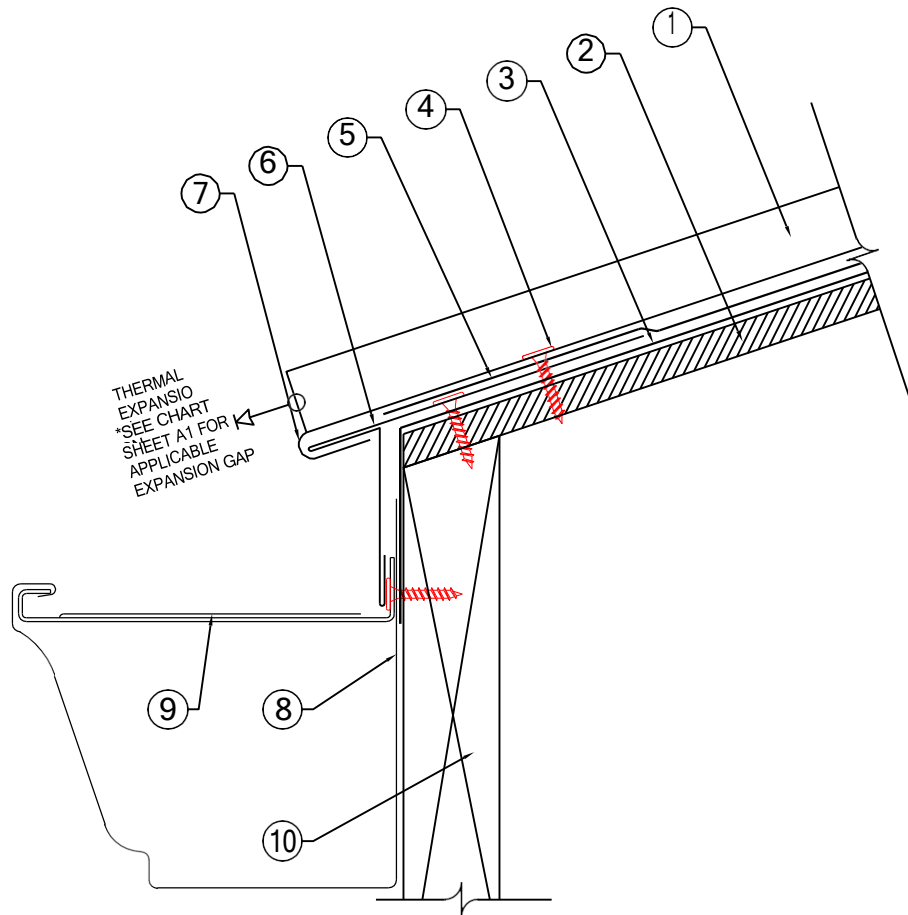


NS100

INSTALLATION DETAILS

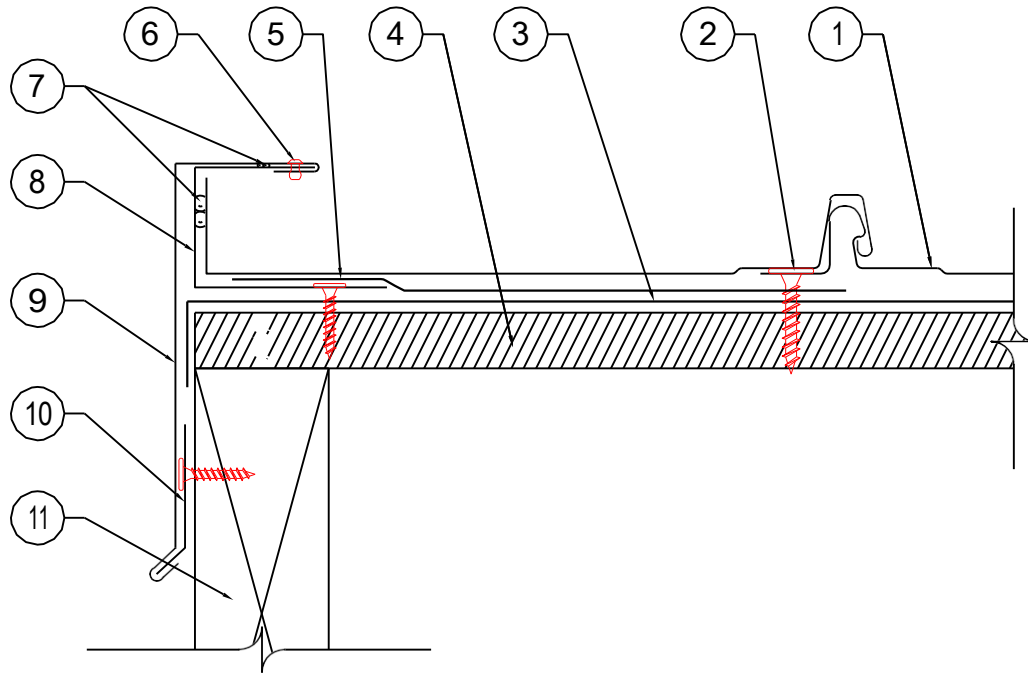


METAL PANEL SYSTEMS



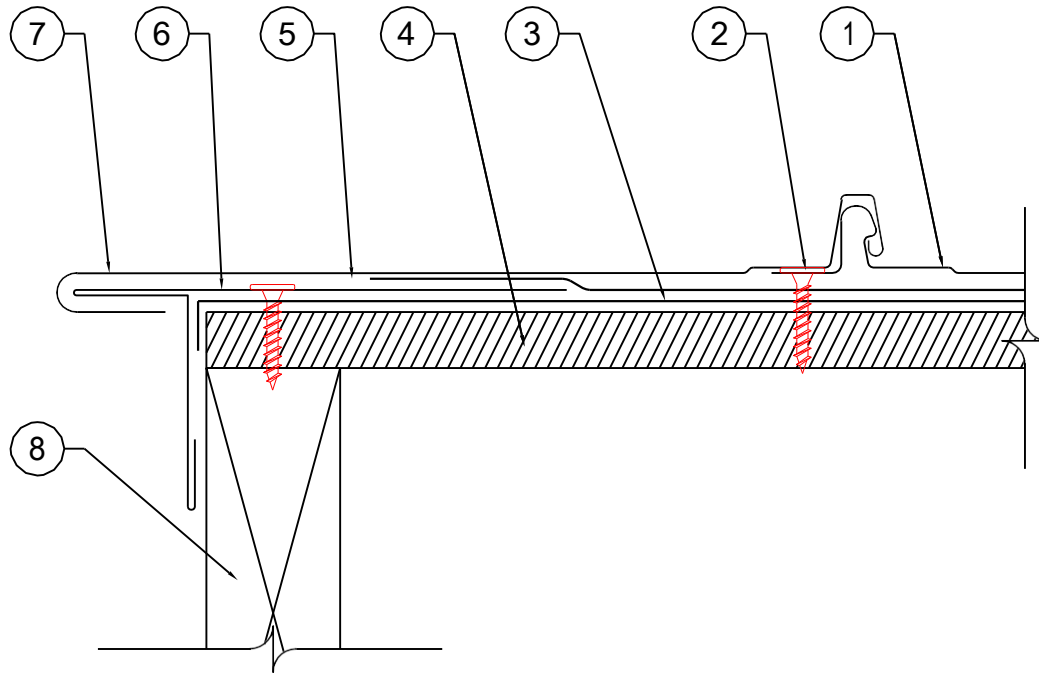
- 1 MPS NS100 PANEL SYSTEM
- 2 SUITABLE ROOF DECK (BY OTHERS)
- 3 ONE LAYER OF MPS ULTRA HT UNDERLAYMENT
- 4 10x1-1/8" ULP PANCAKE HEAD WOOD SCREW, CENTERED EVERY THIRD SLOT
- 5 STRIP IN DRIP EDGE WITH ADDITIONAL COURSE OF MPS ULTRA HT UNDERLAYMENT
- 6 DRIP EDGE, 4" END LAPS WITH CONT. MPS APPROVED CAULK AT LAPS, FASTENED 12" O.C.
- 7 CUT BACK VERTICAL LEGS AND FIELD FORM PANEL AROUND DRIP EDGE
- 8 MPS GUTTER, RIVET AND SEAL AT JOINTS (MIG6 SHOWN)
- 9 INTERNAL GUTTER HANGER AT 24" O.C. TYPICAL (PAINTED EXTERNAL BRACKETS AVAILABLE)
- 10 FASCIA BOARD (BY OTHERS)

METAL PANEL SYSTEMS



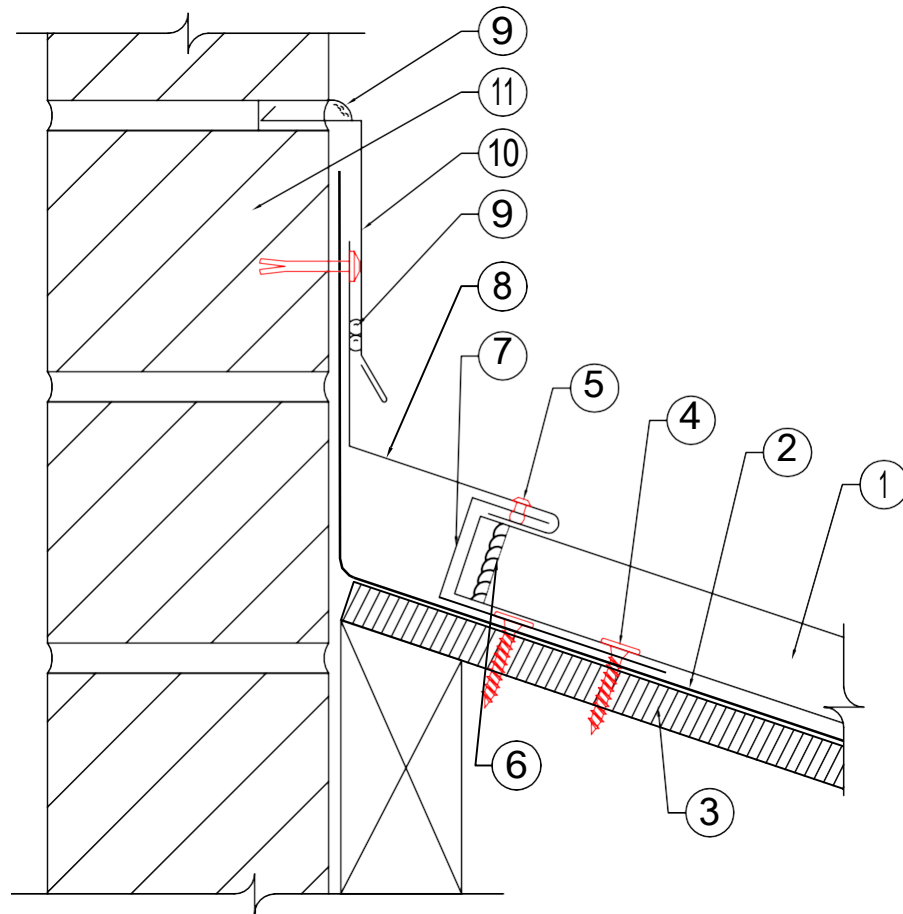
- 1 MPS NS100 PANEL SYSTEM
- 2 10x1-1/8" ULP PANCAKE HEAD WOOD SCREW, CENTERED EVERY THIRD SLOT
- 3 ONE LAYER OF MPS ULTRA HT UNDERLAYMENT
- 4 SUITABLE ROOF DECK (BY OTHERS)
- 5 STRIP IN J-CHANNEL WITH ADDITIONAL COURSE OF MPS ULTRA HT UNDERLAYMENT
- 6 PAINTED POP RIVET, 40" O.C. TYPICAL
- 7 CONTINUOUS BEAD OF MPS APPROVED SEALANT
- 8 J-CHANNEL, 4" END LAPS WITH CONT. MPS APPROVED CAULK AT LAPS
- 9 BOX RAKE, 4" END LAPS WITH CONT. MPS APPROVED CAULK AT LAPS
- 10 CONTINUOUS CLEAT, WITH CONT. MPS APPROVED CAULK AT LAPS
- 11 GABLE FASCIA BOARD (BY OTHERS)

METAL PANEL SYSTEMS



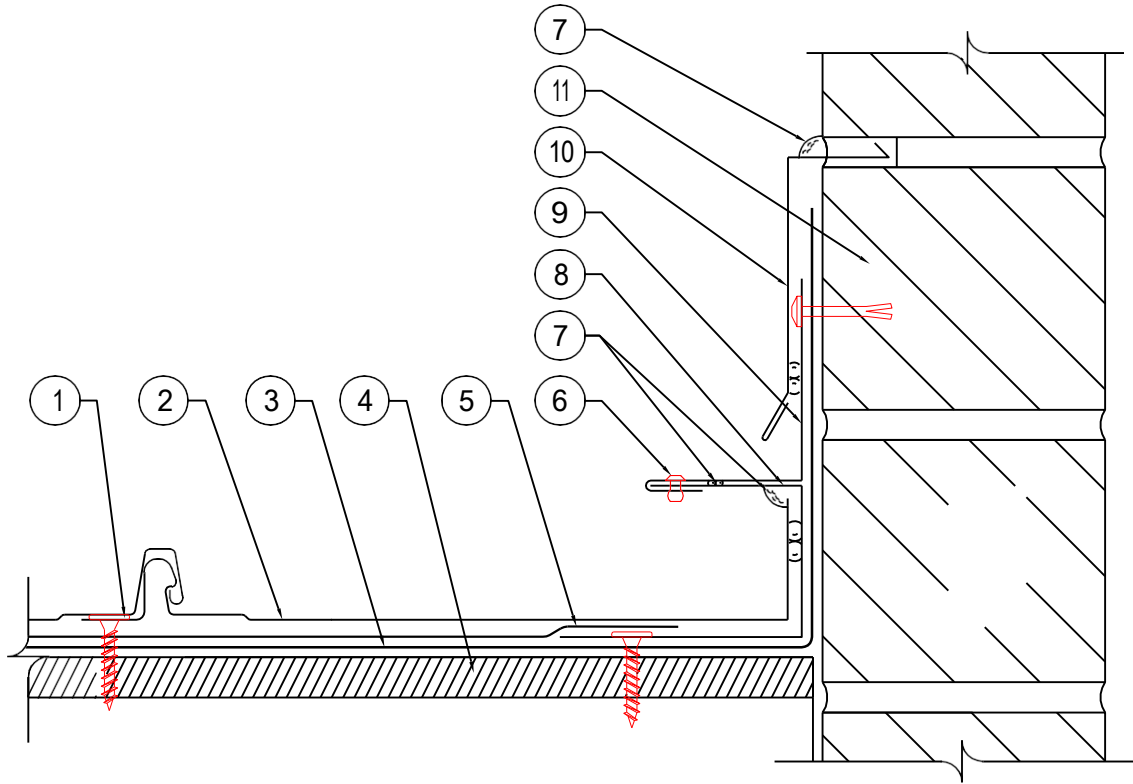
- 1 MPS NS100 PANEL SYSTEM
- 2 10x1-1/8" ULP PANCAKE HEAD WOOD SCREW, CENTERED EVERY THIRD SLOT
- 3 ONE LAYER OF MPS ULTRA HT UNDERLAYMENT
- 4 SUITABLE ROOF DECK (BY OTHERS)
- 5 STRIP IN DRIP EDGE WITH ADDITIONAL COURSE OF MPS ULTRA HT UNDERLAYMENT
- 6 DRIP EDGE, 4" END LAPS WITH CONT. MPS APPROVED SEALANT AT LAPS, FASTENED AT 12" O.C.
- 7 CUT BACK VERTICAL LEGS AND FIELD FORM PANEL AROUND DRIP EDGE
- 8 GABLE FASCIA BOARD (BY OTHERS)

METAL PANEL SYSTEMS



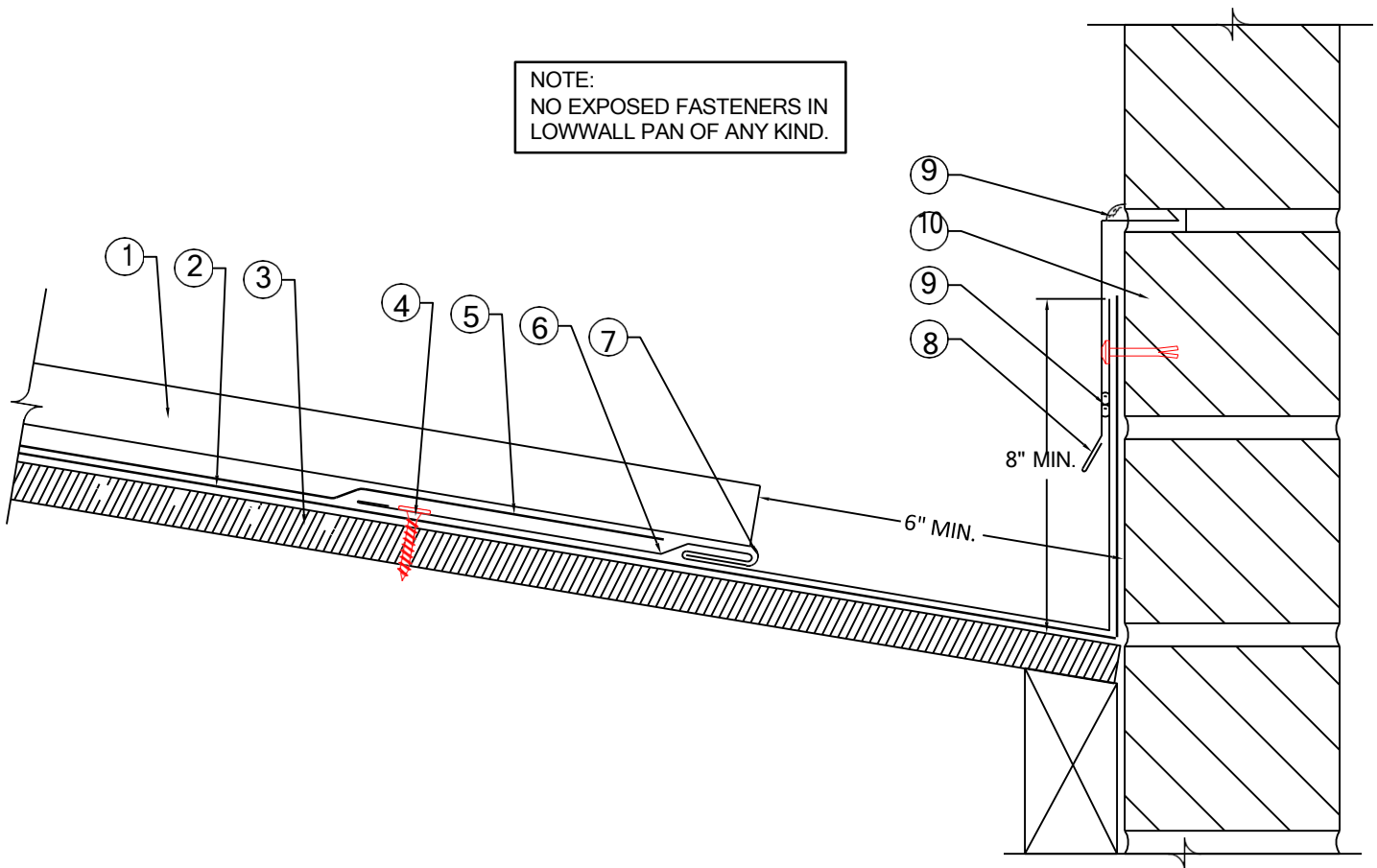
- 1 MPS NS100 PANEL SYSTEM
- 2 ONE LAYER OF MPS ULTRA HT UNDERLAYMENT
- 3 SUITABLE ROOF DECK (BY OTHERS)
- 4 10x1-1/8" ULP PANCAKE HEAD WOOD SCREW, CENTERED EVERY THIRD SLOT
- 5 PAINTED POP RIVET
- 6 BOX PANEL END INSTALLING A BEAD OF MPS APPROVED SEALANT UP VERTICAL LEG
- 7 J-CHANNEL, 4" END LAPS WITH CONT. MPS APPROVED SEALANT AT LAPS
- 8 HIGHWALL FLASHING, 4" END LAPS WITH CONT. MPS APPROVED CAULK AT LAPS
- 9 CONTINUOUS BEAD OF MPS APPROVED SEALANT
- 10 REGLET FLASHING, 4" END LAPS WITH CONT. MPS APPROVED CAULK AT LAPS
- 11 MASONRY WALL (BY OTHERS)

METAL PANEL SYSTEMS



- 1 10x1-1/8" ULP PANCAKE HEAD WOOD SCREW, CENTERED EVERY THIRD SLOT
- 2 MPS NS100 PANEL SYSTEM
- 3 ONE LAYER OF MPS ULTRA HT UNDERLAYMENT
- 4 SUITABLE ROOF DECK (BY OTHERS)
- 5 STRIP IN J-CHANNEL WITH ADDITIONAL COURSE OF MPS ULTRA HT UNDERLAYMENT
- 6 PAINTED POP RIVET, 40" O.C. TYPICAL
- 7 CONTINUOUS BEAD OF MPS APPROVED SEALANT
- 8 J-CHANNEL, 4" END LAPS WITH CONT. MPS APPROVED CAULK AT LAPS
- 9 SIDEWALL, 4" END LAPS WITH CONT. MPS APPROVED CAULK AT LAPS
- 10 REGLET FLASHING, 4" END LAPS WITH CONT. MPS APPROVED CAULK AT LAPS
- 11 MASONRY WALL (BY OTHERS)

METAL PANEL SYSTEMS



- 1 MPS NS100 PANEL SYSTEM
- 2 SINGLE LAYER OF MPS ULTRA HT UNDERLAYMENT
- 3 SUITABLE ROOF DECK (BY OTHERS)
- 4 10x1-1/8" ULP PANCAKE HEAD WOOD SCREW, CENTERED EVERY THIRD SLOT
- 5 STRIP IN LOW WALL FLSG. WITH FIELD COURSES OF MPS ULTRA HT UNDERLAYMENT AND SEAL
- 6 PARAPET LOW WALL FLASHING, 4" END LAPS WITH CONT. MPS APPROVED CAULK AT LAPS
- 7 CUT BACK VERTICAL LEGS AND FIELD FORM PANEL AROUND OFFSET CLEAT
- 8 REGLET FLASHING, 4" END LAPS WITH CONT. MPS APPROVED CAULK AT LAPS
- 9 CONTINUOUS BEAD OF MPS APPROVED SEALANT
- 10 MASONRY WALL (BY OTHERS)



Description:

LOWWALL DETAIL

Detail No.:

MPS-NS-LWD1

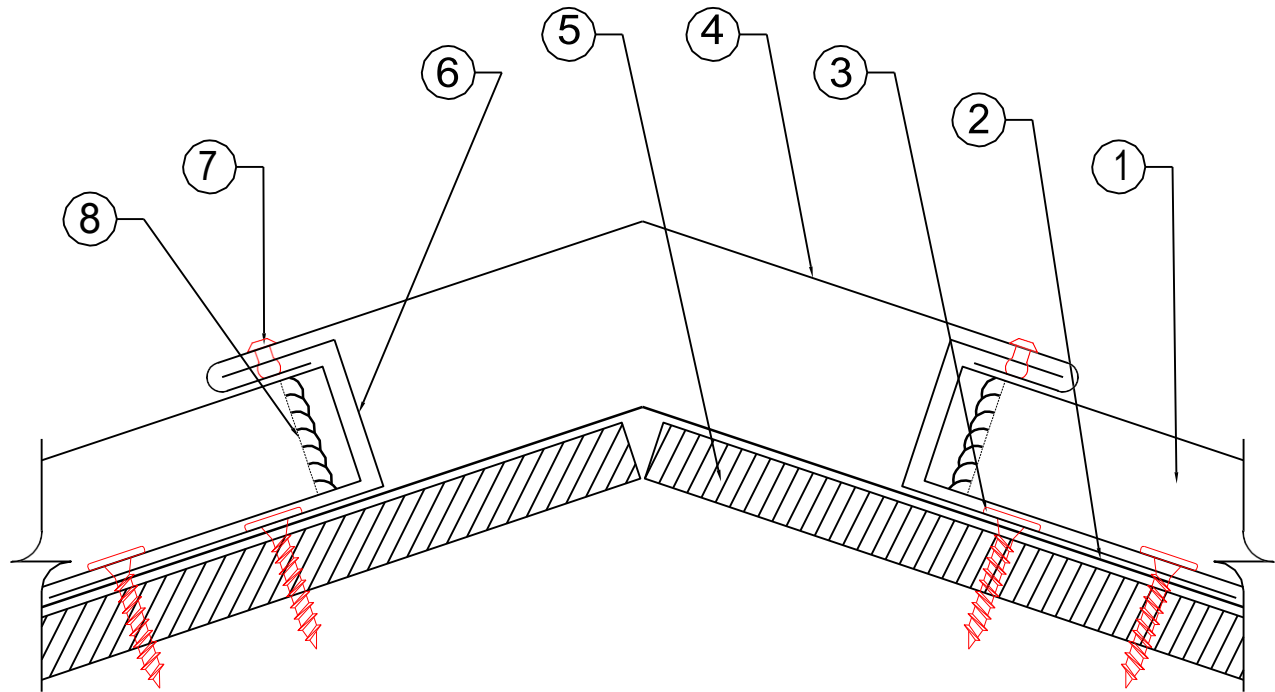
Substrate:

SUITABLE SUBSTRATE

Date:

8/3/2020

METAL PANEL SYSTEMS



- 1 MPS NS100 PANEL SYSTEM
- 2 ONE LAYER OF MPS ULTRA HT UNDERLAYMENT
- 3 10x1-1/8" ULP PANCAKE HEAD WOOD SCREW, CENTERED EVERY THIRD SLOT
- 4 HIP/RIDGE COVER, LAP ENDS MIN. 4" AND USE CONT. MPS APPROVED SEALANT AT LAP, RIVET 40" O.C
- 5 SUITABLE ROOF DECK (BY OTHERS)
- 6 J-CHANNEL, 4" END LAPS WITH CONT. MPS APPROVED SEALANT AT LAPS (20GA PERFORATED STEEL)
- 7 PAINTED POP RIVET, 40" O.C. TYPICAL
- 8 BOX PANEL END INSTALLING A BEAD OF MPS APPROVED SEALANT UP VERTICAL LEG

Description:

NS-100 VENTED RIDGE

Detail No.:

NS-100VR

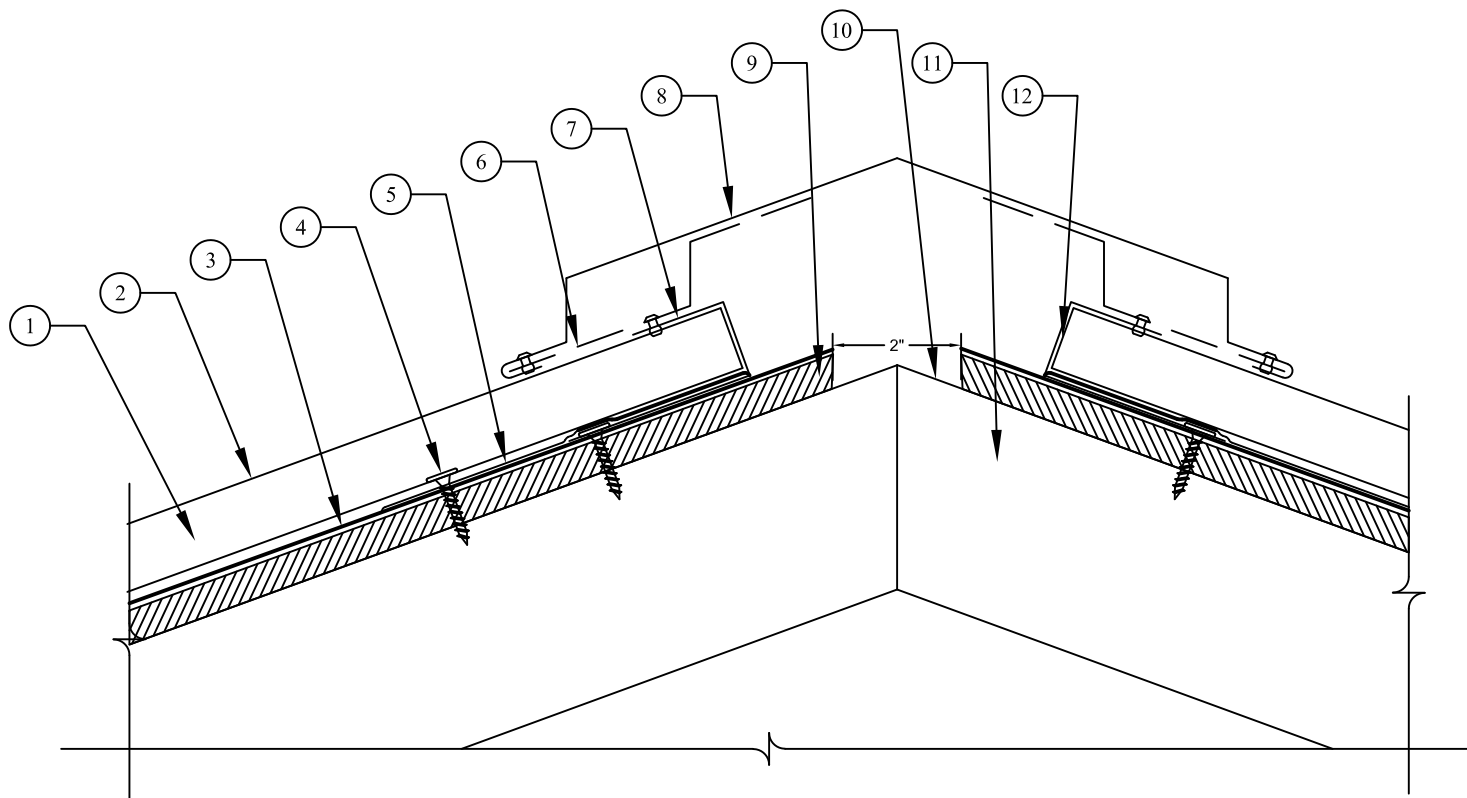
Date:

2/25



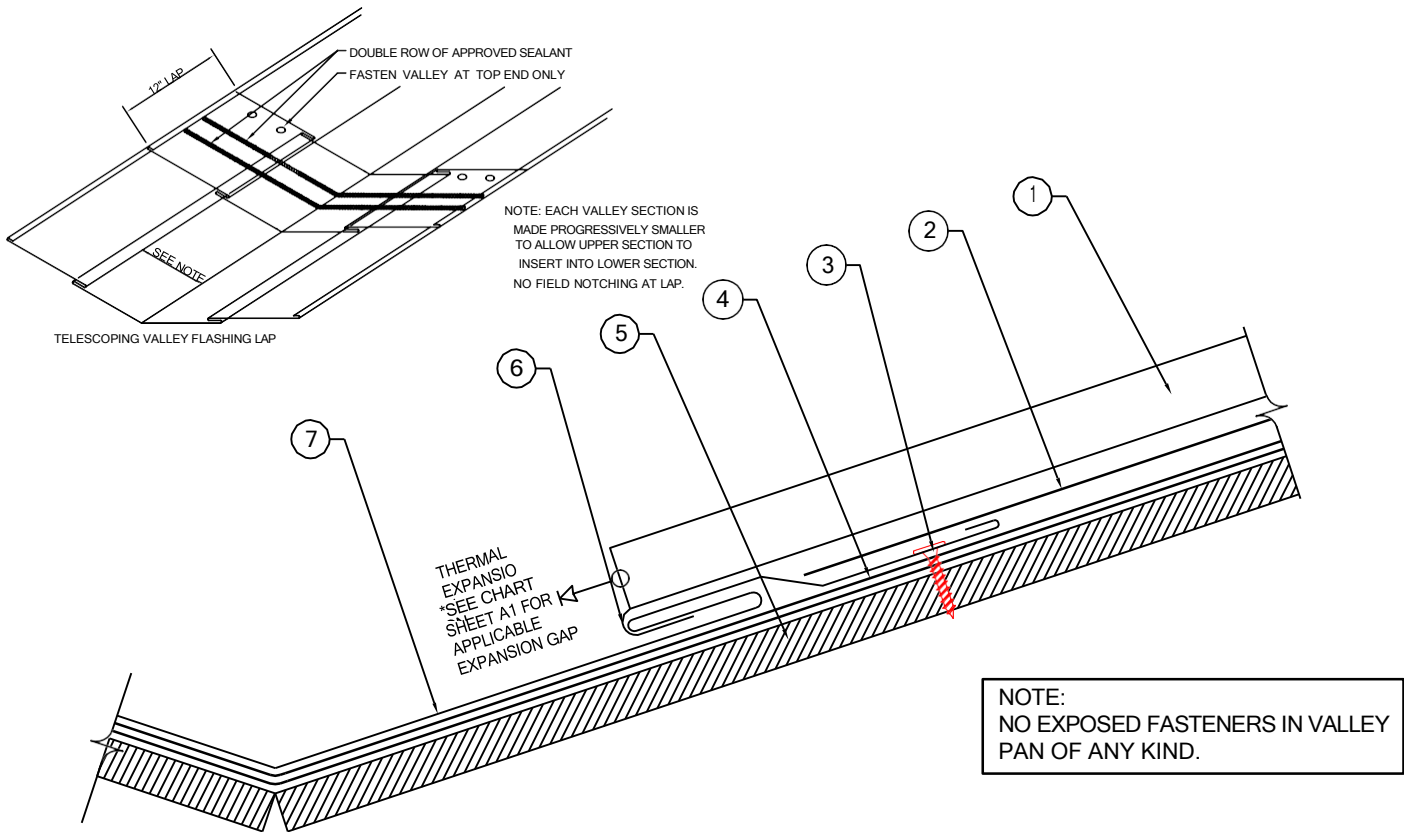
Substrate:

PLYWOOD



1. NS-100 PANEL, FASTEN WITHIN 12" OF BEGINNING OF PANEL IN THE CENTER OF SLOT IN THE NAIL FLANGE, THEN EVERY THIRD SLOT.
2. NS-100 SNAP LOCK SEAM
3. MPS APPROVE UNDERLAYMENT
4. #10-9 X $1\frac{1}{8}$ " ULP WOOD FASTENER
5. ADDITIONAL COURSE OF MPS APPROVED UNDERLAYMENT TO STRIP IN C CHANNEL
6. PERFORATED VENT CLEAT, RIVET TO C CHANNEL 12" O.C.
7. C CHANNEL, 4" END LAPS WITH A CONTINUOUS BEAD OF SEALANT IN THE LAP, FASTEN 12" O.C.
8. VENTED RIDGE CAP, 4" END LAPS WITH CONTINUOUS BEAD OF MPS APPROVED SEALANT IN THE LAP, RIVET TO VENTED CLEAT 30" O.C.
9. PLYWOOD SUBSTRATE, NOT BY MPS
10. GAP IN PLYWOOD SUBSTRATE FOR VENTING, NOT BY MPS
11. FRAMING NOT BY MPS
12. FIELD CUT AND BEND PANEL VERTICALLY THE HEIGHT OF THE C CHANNEL, IF THE PANEL IS CUT, APPLY MPS APPROVED SEALANT.

METAL PANEL SYSTEMS



- 1 MPS NS100 PANEL SYSTEM
- 2 STRIP IN VALLEY FLSG. WITH FIELD COURSES OF MPS ULTRA HT UNDERLAYMENT AND SEALANT
- 3 10x1-1/8" ULP PANCAKE HEAD WOOD SCREW, 24" O.C.
- 4 DOUBLE LAYER OF MPS ULTRA HT UNDERLAYMENT INSTALL LENGTH OF VALLEY
- 5 SUITABLE ROOF DECK (BY OTHERS)
- 6 CUT BACK PANEL LEG AND FORM AROUND ONE-PIECE VALLEY OFFSET HEM
- 7 VALLEY FLASHING, 12" END LAPS WITH DOUBLE ROW OF CONT. MPS APPROVED CAULK AT LAPS